



WIScloud Controller

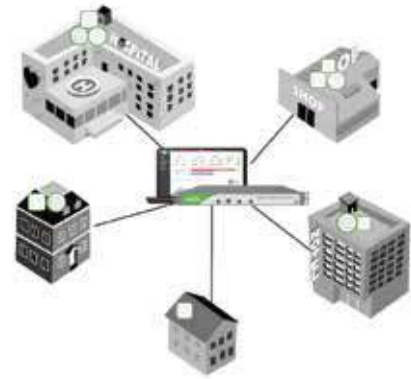
Model:WCAC

WisCloud Controller is a carrier grade Wireless Network Management System developed by Wisnetworks. It supports the full range of Wiscloud APs centrally management and monitoring tasks for network administrator. It is integrated powerful features to control multiple and distributed APs in a high effective approach.

Features

Cloud-based Configuration

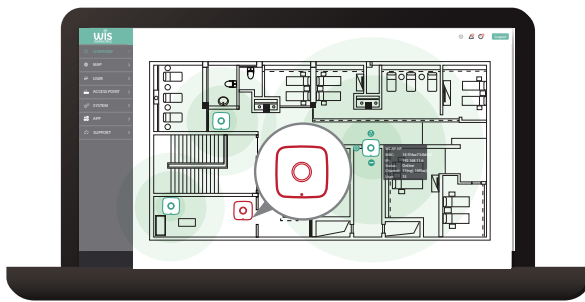
WisCloud controller provides wireless network management from anywhere instead of on-site. With powerful and intuitive platform, it enables batch management for all registered access points, including the one-button configuration of all AP which makes it quite convenient to update and maintain.



Cloud-based configuration

Wireless Map

Through wireless map function, administrator is intuitive and convenient to monitor each AP health status in the network along with the number of users and network coverage quality. For the failure of AP can be quickly positioned so as to speed up the troubleshooting.



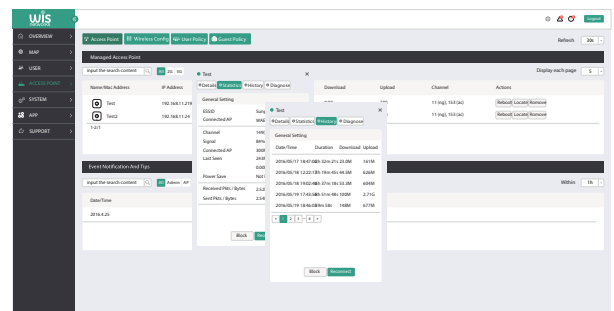
Expedite Troubleshooting

L2 / L3 Auto-discovery

AP would be auto-detected by controller in the same WLAN network. In the condition of Layer 3 or access controller deployed in the cloud, using provided utility could make all AP devices being discovered by AC in few minutes.

Real-time Status

Real-time statistics provide for network online APs /users signal and interference monitoring. For network history traffic record can be traced from 24hours to 30days.



Real-time Statistics

Load Balancing

Wiscloud system is equipped with intelligent user load balancing, thus making the product either applicable to the sparsely populated rural condition or hi-density population city or large conference and exhibition and ensuring each AP to work in maximum efficiency to build a stable and permanent wireless network.



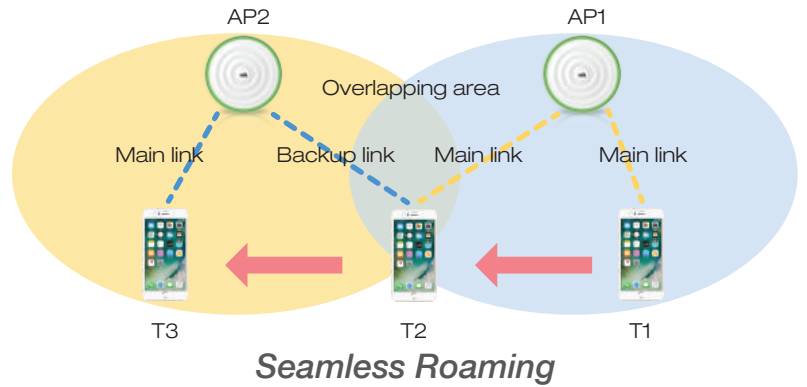
Wi-Fi System without Load Balancing



Wi-Fi System with Load Balancing

Seamless Roaming

WisCloud controller embeds a kind of WLAN optimization function to realize zero sense roaming. It makes the Wi-Fi experience more smooth while switching connection between two access points with zero packet loss.



Customizable Captive Portal

WisCloud controller could help to configure different portal pages due to SSID authentication capability. Customizable captive portal promotes the specific business ad to attract targeted audience for different merchants.



Voucher Certification

We take fee-based Wi-Fi service into account when focusing on the billing server. One Wi-Fi user logs in by the given registration account, he could select the Wi-Fi service(diff. duration/speed) manually with different charge.

Essid	Code	Type	Valid period(hour)	Quota(MB)	Create Time
DefaultGroup/Name	75425-33571				
DefaultGroup/Name	04514-86909				
DefaultGroup/Name	16881-70871				
DefaultGroup/Name	22727-29368				
DefaultGroup/Name	19958-67077				
DefaultGroup/Name	63894-79370				
cardtest	16879-81572				

Card coupon added

ESSID:

Quantity:

Valid period(hour):

Quota(MB):

Type:

Note: Up to 80 words

Input The Code

Voucher Certification

Specifications

WisCloud Controller

Physical Characteristics	
Processor	Dual-Core 1.8GHz CPU
Memory	2GB DDR RAM
Hardisk	8G SSD
Ethernet	1*10/100/1000Mbps Data Port, 1*10/100/1000Mbps Management Port
LED	Power& SSD Indicator
Other Interface	2*USB2.0, 1 Console RJ-45 port
Power	Input: 110 – 240V AC, Output: 12VDC/5A
Weight	2.2 kg
Temperature	Working Temperature: 10℃ ~60℃ , Storage Temperature: -20℃ ~70℃
Relative Humidity	5%-95%, no-condensing
Installation	Desk-top & Rack-mount
Dimension	430mm*250mm*46mm (19 inches, 1U)
Management	
Configuration	Web GUI, CLI
AP Provisioning	L2 or L3 auto-discovery, Auto online software upgrade
Traffic History	Supported
Capacity	
Managed APs	Unlimited
Concurrent Users	Unlimited
Network Architecture	
IP	IPv4 / IPv6
VLANs	802.1Q (8 BSSID per radio)
Redundancy	1+1 with auto-synchronization
Wireless	
Wireless Security	WEP, WPA-PSK, WPA-Enterprise (WPA/WPA2, TKIP/AES)
Access Control	L2 (MAC address-based), L2 client isolation
Wireless Intrusion Detection (WIDS)	Rogue AP detection
802.11e/WMM	Supported
Rate Limiting	Supported
Wlan Group	Supported
RF Management	Automatic channel and power optimization
Client Load Balancing	Automatic
Guest Access	Supported
Captive Portal	Supported
Mesh(Wireless Uplink)	Supported



DECLARATION OF CONFORMITY

We, Importer/Distributor DOTMEDIA LTD

KATEVASIAS & NTALIAS 18 AXARNAI, GREECE

In accordance with the following Directives:

**EMC Directive 2004/108/EC, Low Voltage Directive 2006 /95/EC,
R&TTE Directive 1999/5/EC**

The product is compatible with the following norms/standards

<u>Applied Standards</u>	<u>Report No.</u>
Article 3.2 : Effective Use OF the Radio Spectrum ETSI EN 300 328 V1.7.1 (2006-10)	TEK-2013NT1213776R1 (07/01/2015)
Article 3.1b : Electromagnetic Compatibility ETSI EN 301 489-17 V2.2.1 (2012-09) ETSI EN301 489-1 V1.9.2 (2011-09)	NTEK-2013NT1213774E1 (07/01/2015)
Article 3.1a : Health and Safety ETSI EN 62311:2008 EN 60950-1:2006+A11:2009+A1:2010+A12:2011	NTEK-2013NT1213774H (07/01/2015) NTEK-2013NT1213776S (23/01/2015)

Hereby we declare that:

Equipment	Gateway/Controller
Model number	WIS-R7100 /WCAC
Brand name	WISnetworks

Is in conformity with the applicable requirements of the following documents
I hereby declare that the equipment named above has been designed to comply with the Relevant sections of the above referenced specifications. The unit complies with all Applicable Essential Requirements of the Directives

Place and date of issue

AXARNAI, 09/03/2018

Signature

DOTMEDIA ΕΜΠΟΡΙΑ ΑΝΑΛΟΓΙΜΩΝ ΕΙΔΩΝ
& ΕΦΑΡΜΟΓΩΝ ΠΛΗΡΟΦΟΡΙΚΗΣ ΕΠΕ
ΥΠΟΒΛΗΘΗΚΕ ΣΤΗΝ ΕΠΙΤΡΟΠΗ ΚΑΤΑΒΑΣΙΑΣ
ΚΑΤΕΒΑΣΙΑΣ & ΝΤΑΛΙΑΣ ΑΧΑΡΝΩΝ Τ.Κ. 17671
Α.Φ.Μ.: 999075747 - Δ.Ο.Υ.: ΑΧΑΡΝΩΝ
ΤΗΛ.: 210 2849836, 210 2840486, 210 2849419
FAX: 210 2446835

(Theodoros Mavroeidis)